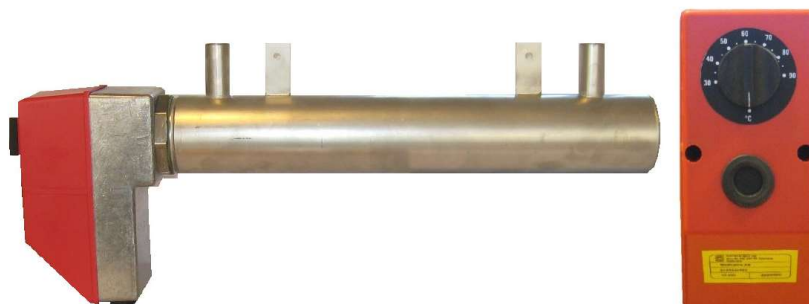


## Electrical heater



As an option, to secure that the cleaning water keeps an optimal temperature, Wedholms offers an electrical heater. The heater is connected into the cleaning system and the water is heated up as it flows through the heater during the cleaning process.

The heater is only active in cleaning phase 4. This phase runs until the desired temperature set into the control unit Argos is reached (not the electrical heater) or the set maximal waiting time has been passed. **Note!** The knob on the heater should be set between 60°- 70° C.

The heating element is installed in a stainless-steel container that is installed in the pressure pipe of the cleaning pump. The electrical heater is supplied with a built-in thermostat and an overheating protection.

**Note!** If the electrical heater isn't installed within two weeks, it must be stored at a dry area with minimum room temperature of +20°C and with a relative humidity below 50%. After installation it's not affected regarding temperature or humidity.

### Technical data

<b>Voltage</b>	400V	400V	230V
<b>Electrical power</b>	10 kW	7,5 kW	7,5 kW
<b>Current</b>	14.5 A	10.8 A	18.8 A
<b>Fuse</b>	16 A	13 A	20 A
<b>Max temperature</b>	85° C	85° C	85° C
<b>Protection class</b>	IP44	IP44	IP44

### Water quality

In localities with hard water (water rich in lime), so-called boiler scale builds up on the heating element. Boiler scale consists mainly of calcium and magnesium carbonates, which are dissolved in water at lower water temperatures but are deposited as a hard coating at a higher temperature. In heating systems, boiler scale adheres to heating elements and acts as an insulator, which increases the surface temperature of the heating element. The service life of the heating element decreases at a higher temperature, and the risk of short-circuiting, spark-over or leakage increases. In order to avoid problems caused by boiler scale, inspection and any necessary descaling of the heating element should be carried out at regular intervals when the heater is installed in locations with so-called hard water (>14°dH). A high chlorine content in the water can cause damage to the stainless-steel heating element.

### Installation

The equipment must be installed horizontally with the connections facing upwards. The heating element must only be turned on during a filled liquid phase and when the cleaning pump is functioning.

For connecting of a heater to the Argos control unit see page 3(3).

For programming of parameters for a heater in Argos, see the manual for Argos.

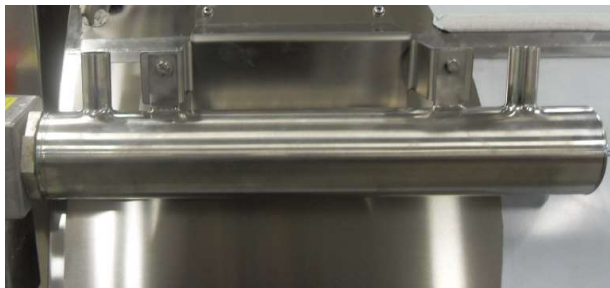
All electrical installation must be carried out by a qualified electrical contractor.

Installation of the heater at the side of the tank with connection to the cleaning line for the cleaning device.

1. Install the console at the tank



2. Install the heater and hoses



---

Installation of the heater at the front of the tank to/at the Argos console

1. Install the console at the tank



2. Install the heater and connect the hoses to the Argos console



## Wiring diagram

Wiring diagram for the electrical heater and Argos.

